

AUDIO RESEARCH

THE SC-SERIES

AND SQ-SERIES





## SC-05 ART. 09180

SMALL CUBE WITH 5" COAXIAL SPEAKER.

- PASSIVE 2WAY CROSSOVER
- 5" LF-FERRITE SPEAKER + 1.75" DRIVER (0.75" VOICE COIL)
- 4POLE SPEAKONS IN/OUT + 4POLE EUROBLOCK CONNECTOR
- SWITCH TO CHOOSE  $\pm 1$  OR  $\pm 2$
- MAX SPL: 119dB
- 1ST CHOICE BALTIC BIRCH PLYWOOD WITH SCRATCH FREE BLACK TEXTURED POLYUREA FINISHING
- MOUNTING :
  - USING AN OPTIONAL OMEGA CLAMP
  - CAN BE MOUNTED ON AN OPTIONAL MICROPHONE STAND
  - USING INCLUDED U-BRACKET
- BANDWIDTH: 120 - 21.000Hz (-3dB)
- NOMINAL DIRECTIVITY: 70° CONICAL
- POWER: 250WAES (RECOMMENDED AMPLIFIER: 500WRMS)
- IMPEDANCE: 16  $\Omega$
- DIMENSIONS: 165x165x165MM
- WEIGHT: 4KG



## SC-08 ART. 09181

COMPACT BUT POWERFUL 8" COAXIAL SPEAKER CABINET

- PASSIVE 2WAY CROSSOVER
- 8" LF-NEODYMIUM SPEAKER + 1.45" DRIVER (1" VOICE COIL)
- SPEAKONS: IN + OUT
- SWITCH TO CHOOSE  $\pm 1$  OR  $\pm 2$
- MAX SPL: 123dB
- 1ST CHOICE BALTIC BIRCH PLYWOOD WITH SCRATCH FREE BLACK TEXTURED POLYUREA FINISHING
- MOUNTING:
  - USING AN OPTIONAL OMEGA CLAMP
- BANDWIDTH: 70 - 20.000Hz (-3dB)
- NOMINAL DIRECTIVITY: 90° CONICAL
- POWER: 300WAES (RECOMMENDED AMPLIFIER: 600WRMS)
- IMPEDANCE: 8  $\Omega$
- DIMENSIONS: 254x420x250MM
- WEIGHT: 8KG



## SC-12 ART. 09182

COMPACT BUT POWERFUL 12" COAXIAL SPEAKER CABINET

- PASSIVE 2WAY CROSSOVER
- 12" LF-NEODYMIUM SPEAKER + 1.75" DRIVER (1" VOICE COIL)
- 3 SPEAKONS: 2 ON LEFT SIDE + 1 ON RIGHT SIDE
- SWITCH TO CHOOSE  $\pm 1$  OR  $\pm 2$
- MAX SPL: 128dB
- 1ST CHOICE BALTIC BIRCH PLYWOOD WITH SCRATCH FREE BLACK TEXTURED POLYUREA FINISHING
- BANDWIDTH: 60 - 20.000Hz (-3dB)
- NOMINAL DIRECTIVITY: 60° x 40°
- POWER: 400WAES (RECOMMENDED AMPLIFIER: 800WRMS)
- IMPEDANCE: 8  $\Omega$
- DIMENSIONS: 351x540x410MM
- WEIGHT: 16KG



## SC-15 ART. 09183

POWERFUL 15" COAXIAL SPEAKER CABINET

- PASSIVE 2WAY CROSSOVER
- 15" LF-NEODYMIUM SPEAKER + 1.75" DRIVER (1" VOICE COIL)
- 3 SPEAKONS: 2 ON LEFT SIDE + 1 ON RIGHT SIDE
- SWITCH TO CHOOSE  $\pm 1$  OR  $\pm 2$
- MAX SPL: 128dB
- 1ST CHOICE BALTIC BIRCH PLYWOOD WITH SCRATCH FREE BLACK TEXTURED POLYUREA FINISHING
- BANDWIDTH: 54 - 19.000Hz (-3dB)
- NOMINAL DIRECTIVITY: 60° x 40°
- POWER: 400WAES (RECOMMENDED AMPLIFIER: 800WRMS)
- IMPEDANCE: 8  $\Omega$
- DIMENSIONS: 368x580x447MM
- WEIGHT: 19KG





## SQ-212

ART. 09187

- EXTREMELY POWERFUL AND COMPACT 2x 12" SUBWOOFER
- DESIGNED, DEVELOPED, AND MANUFACTURED IN EUROPE
- NEODYMIUM DRIVERS
- BALTIC BIRCH PLYWOOD WITH POLYUREA FINISHING
- AES POWER: 2400 WATT
- IMPEDANCE: 4 OHM
- LOW FREQ. LIMIT: 35 HZ (-10dB)
- SENS. SPL (1W/1M): 101dB
- CONT. SPL (1M): 135 dB
- MAX. SPL (1M): 145 dB (PEAK LEVEL USING PINK NOISE, 100B CREST FACTOR)
- DIMENSIONS (CM): 60x60x40CM
- WEIGHT: 38.2KG



## SQ-215

ART. 09188

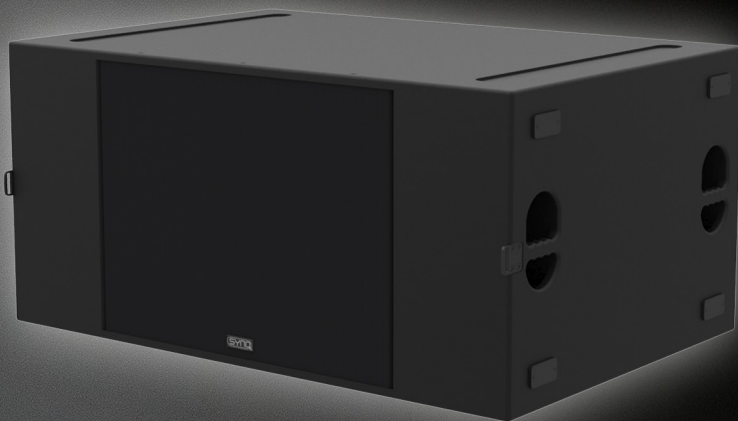
- EXTREMELY POWERFUL AND COMPACT 2x 15" SUBWOOFER
- DESIGNED, DEVELOPED, AND MANUFACTURED IN EUROPE
- NEODYMIUM DRIVERS
- BALTIC BIRCH PLYWOOD WITH POLYUREA FINISHING
- AES POWER: 2400 WATT
- IMPEDANCE: 4 OHM
- LOW FREQ. LIMIT: 30 HZ (-10dB)
- SENS. SPL (1W/1M): 101dB
- CONT. SPL (1M): 135 dB
- MAX. SPL (1M): 145 dB (PEAK LEVEL USING PINK NOISE, 100B CREST FACTOR)
- DIMENSIONS (CM): 80x80x54CM
- WEIGHT: 60KG



## SQ-218

ART. 09189

- EXTREMELY POWERFUL AND COMPACT 2x18" SUBWOOFER
- DESIGNED, DEVELOPED, AND MANUFACTURED IN EUROPE
- NEODYMIUM DRIVERS
- BALTIC BIRCH PLYWOOD WITH POLYUREA FINISHING
- AES POWER: 2400 WATT
- IMPEDANCE: 4 OHM
- LOW FREQ. LIMIT: 25 HZ (-10dB)
- SENS. SPL (1W/1M): 102dB
- CONT. SPL (1M): 136 dB
- MAX. SPL (1M): 146 dB (PEAK LEVEL USING PINK NOISE, 100B CREST FACTOR)
- DIMENSIONS (CM): 118x80x56CM
- WEIGHT: 80KG



## DOLLIES

- PREMIUM QUALITY DOLLY FOR EASY AND SAFE TRANSPORTATION OF THE SUBS
- PROTECTS FRONT OF THE SUBS DURING TRANSPORT
- STRONG PLYWOOD WITH SCRATCH FREE SURFACE
- QUICK AND EASY LOCKING MECHANISM
- AVAILABLE IN 3 SIZES TO MATCH THE SUBS
  - SQ-212 DOLLY
  - SQ-215 DOLLY
  - SQ-218 DOLLY





## CASE FOR 8X SC-05 ART.03259



- PREMIUM QUALITY FLIGHT CASE "MADE IN EUROPE"
- INGENIOUS DESIGN FOR SAFE TRANSPORT OF:
  - 8PCS SC-05 CABINETS
  - 8PCS FAST CLAMPS
- STRONG PLYWOOD WITH SCRATCH FREE "HEXA" SURFACE
- INSIDE WITH SPECIALLY ADAPTED PROTECTION FOAM
- EQUIPPED WITH SEVERAL RECESSED FLIP HANDLES ON ALL SIDES
- 4 SOFT RUBBER CASTORS, 2 WITH BRAKES
- STANDARD "TRUCK SIZE": 80 X 60CM (H: 28CM / 42CM INCL CASTORS)
- WEIGHT: 25KG



- PREMIUM QUALITY FLIGHT CASE "MADE IN EUROPE"
- INGENIOUS DESIGN FOR SAFE TRANSPORT OF:
  - 4PCS SC-08 CABINETS
  - 4PCS FOLDABLE U-BRACKETS
  - 4PCS FAST CLAMPS
- STRONG PLYWOOD WITH SCRATCH FREE "HEXA" SURFACE
- INSIDE WITH SPECIALLY ADAPTED PROTECTION FOAM
- EQUIPPED WITH SEVERAL RECESSED FLIP HANDLES ON ALL SIDES
- 4 SOFT RUBBER CASTORS, 2 WITH BRAKES
- STANDARD "TRUCK SIZE": 80 X 60CM (H: 66CM / 80CM INCL CASTORS)
- WEIGHT: 41KG



## CASE FOR 2X SC-12 ART.03261



- PREMIUM QUALITY FLIGHT CASE "MADE IN EUROPE"
- INGENIOUS DESIGN FOR SAFE TRANSPORT OF:
  - 2PCS SC-12 CABINETS
  - 2PCS FOLDABLE U-BRACKETS
- STRONG PLYWOOD WITH SCRATCH FREE "HEXA" SURFACE
- INSIDE WITH SPECIALLY ADAPTED PROTECTION FOAM
- EQUIPPED WITH SEVERAL RECESSED FLIP HANDLES ON ALL SIDES
- 4 SOFT RUBBER CASTORS, 2 WITH BRAKES
- STANDARD "TRUCK SIZE": 80 X 60CM (H: 66CM / 80CM INCL CASTORS)
- WEIGHT: 32KG



- PREMIUM QUALITY FLIGHT CASE "MADE IN EUROPE"
- INGENIOUS DESIGN FOR SAFE TRANSPORT OF:
  - 2PCS SC-15 CABINETS
  - 2PCS FOLDABLE U-BRACKETS
- STRONG PLYWOOD WITH SCRATCH FREE "HEXA" SURFACE
- INSIDE WITH SPECIALLY ADAPTED PROTECTION FOAM
- EQUIPPED WITH SEVERAL RECESSED FLIP HANDLES ON ALL SIDES
- 4 SOFT RUBBER CASTORS, 2 WITH BRAKES
- STANDARD "TRUCK SIZE": 80 X 60CM (H: 66CM / 80CM INCL CASTORS)
- WEIGHT: 31KG



## BRACKET FOR SC-08 ART.09184

- HEAVY DUTY U-BRACKET
- THE FOLDABLE DESIGN MAKES IT COMPACT FOR TRANSPORT
- MAKES IT POSSIBLE TO CHANGE THE SPEAKER CABINET IN DIFFERENT ANGLES
- INDEXING PLUNGER LOCKS



## BRACKET FOR SC-12 ART.09185

- HEAVY DUTY U-BRACKET
- THE FOLDABLE DESIGN MAKES IT COMPACT FOR TRANSPORT
- MAKES IT POSSIBLE TO CHANGE THE SPEAKER CABINET IN DIFFERENT ANGLES
- INDEXING PLUNGER LOCKS



## BRACKET FOR SC-15 ART.09186

- HEAVY DUTY U-BRACKET
- THE FOLDABLE DESIGN MAKES IT COMPACT FOR TRANSPORT
- MAKES IT POSSIBLE TO CHANGE THE SPEAKER CABINET IN DIFFERENT ANGLES
- INDEXING PLUNGER LOCKS



THE NEW SYNQ SC-SERIES IS A SERIES OF HIGH-QUALITY COAXIAL SPEAKER CABINETS.

IN COMBINATION WITH THE NEW SUBWOOFERS FROM  
THE SQ-SERIES THEY ARE THE IDEAL CHOICE FOR ALL APPLICATIONS  
WHERE SOUND QUALITY, PERFORMANCE AND EASE OF USE ARE ESSENTIAL.

OUR BELGIAN PRODUCT DEVELOPMENT TEAM IS TRAINED BY DECADES  
OF EXPERIENCE AND ACTION "IN THE FIELD".

AS SKILLED SOUND EXPERTS THEY WORKED HARD FOR  
OVER 2 YEARS TO DESIGN THESE NEW INNOVATIVE SPEAKER RANGES.

TO GUARANTEE THE QUALITY WE DECIDED TO KEEP ALL PROCESSES - DESIGN,  
DEVELOPMENT, MANUFACTURING AND SUPPORT - IN EUROPE AND ONLY USE COMPONENTS  
THAT MEET THE HIGHEST STANDARDS LIKE:

BEYMA AND FAITAL PRO DRIVERS, MUNDORF RESISTORS, MKP CAPACITORS, ...

WE DECIDED TO USE NEODYMIUM DRIVERS INSTEAD OF THE TYPICAL IRON-FERRITE  
MAGNETS AS THEY ARE VERY POWERFUL AND WEIGH MUCH LESS.

THE CABINETS ARE MADE FROM 1ST CHOICE BALTIC BIRCH PLYWOOD AND HAVE A SCRATCH  
FREE BLACK TEXTURED POLYUREA PAINTING/FINISHING.

THEY CAN BE PLACED IN DIFFERENT ANGLES AND MOUNTED IN DIFFERENT WAYS USING  
OPTIONAL BRACKETS OR OPTIONAL OMEGA CLAMPS.

FOR SAFE TRANSPORT OF THE SC-SPEAKERS AND IT'S ACCESSORIES WE ALSO OFFER  
OPTIONAL, STACKABLE, PREMIUM QUALITY FLIGHT CASES.

THE INGENUOUS DESIGN OF THE CASES ALLOWS TESTING OF  
THE SPEAKERS INSIDE THE CASE WITHOUT THE  
NEED TO REMOVE THE SPEAKERS FROM THE CASE.



FOLLOW US



WWW.FACEBOOK.COM/SYNQ.AUDIO



WWW.SYNQ-AUDIO.COM

TO BE SURE THAT YOU HAVE THE BEST AUDIO EXPERIENCE AND SPEAKER PROTECTION, WE PROVIDE FULLY OPTIMIZED SETTINGS FOR OUR NEW SPEAKERS. THE DBX DRIVERACK® PA2 AND VENU360 PROCESSORS WERE SELECTED TO OPTIMIZE AND PROTECT OUR NEW SC-SERIES IN COMBINATION WITH OUR EXISTING LINE OF DIGIT AMPLIFIER SERIES.

## DBX DRIVERACK PA2



- COMPLETE LOUDSPEAKER MANAGEMENT SYSTEM
- 2 INPUTS: 8-BAND PARAMETRIC, DBX COMPRESSORS, AFS ANTI-FEEDBACK, SUBHARMONIC SYNTH, ...
- 6 OUTPUTS: 2WAY / 3WAY X-OVER, 8-BAND PARAMETRIC EQS, LIMITERS, ALIGNMENT DELAYS
- RTA-MIC INPUT WITH AUTOEQ ALGORITHM FOR AUTOMATIC ROOM EQUALIZING
- ETHERNET CONTROL VIA AN ANDROID®, IOS®, MAC®, OR WINDOWS® SOFTWARE APPS
- EXCELLENT AUDIO PERFORMANCE

## DBX DRIVERACK VENU360



- COMPLETE LOUDSPEAKER MANAGEMENT SYSTEM
- 3 ANALOG INPUTS OR 2 DIGITAL AES INPUTS: 12-BAND PARAMETRIC E, 31BAND GRAPH EQ, DBX COMPRESSORS, AFS ANTI-FEEDBACK, SUBHARMONIC SYNTH, NOISE GATE, ...
- 6 OUTPUTS: DIFFERENT X-OVERS, 8-BAND PARAMETRIC EQS, LIMITERS, ALIGNMENT + TOWER DELAYS, NOISE GATE, AGC, ...
- RTA-MIC INPUT WITH AUTOEQ ALGORITHM FOR AUTOMATIC ROOM EQUALIZING
- ETHERNET CONTROL VIA AN ANDROID®, IOS®, MAC®, OR WINDOWS® SOFTWARE APPS
- EXCELLENT AUDIO PERFORMANCE

## DIGIT AMPLIFIERS



### DIGIT 1K0 ART. 00268

- THE EXTREMELY HIGH EFFICIENCY, REDUCED POWER WASTE AND VERY LOW HEAT DISSIPATION ARE THE MAIN ADVANTAGES OF THESE PWM-AMPLIFIERS!
- HIGH POWER OUTPUT: 2X 540WRMS @ 4Ω
- OUTPUT IN BRIDGE MODE: 1080WRMS @ 8Ω
- LOW WEIGHT: 3,3KG!



### DIGIT 2K2 ART. 00266

- THE EXTREMELY HIGH EFFICIENCY, REDUCED POWER WASTE AND VERY LOW HEAT DISSIPATION ARE THE MAIN ADVANTAGES OF THESE PWM-AMPLIFIERS!
- HIGH POWER OUTPUT: 2X 1100WRMS @ 4Ω
- OUTPUT IN BRIDGE MODE: 2200WRMS @ 8Ω
- LOW WEIGHT: 5,5KG!



### DIGIT 3K6 ART. 00267

- THE EXTREMELY HIGH EFFICIENCY, REDUCED POWER WASTE AND VERY LOW HEAT DISSIPATION ARE THE MAIN ADVANTAGES OF THESE PWM-AMPLIFIERS!
- HIGH POWER OUTPUT: 2X 1800WRMS @ 4Ω
- OUTPUT IN BRIDGE MODE: 3600WRMS @ 8Ω
- LOW WEIGHT: 5,6KG!

YOUR DEALER

WWW.SYNQ-AUDIO.COM

BEGLEC NV HAS THE RIGHT TO CHANGE PRODUCTS AND SPECIFICATIONS WITH AND WITHOUT NOTICE. MAJOR AS WELL AS MINOR CHANGES CAN BE INVOLVED. THIS CATALOG CAN CONTAIN ERRORS, THEREFORE WE ADVISE TO CONSULT YOUR LOCAL DEALER TO ENSURE THAT ACTUAL FEATURES AND SPECIFICATIONS MATCH YOUR REQUIREMENTS.

COPYRIGHT © 2017 BY BEGLEC NV. ALL RIGHTS RESERVED.