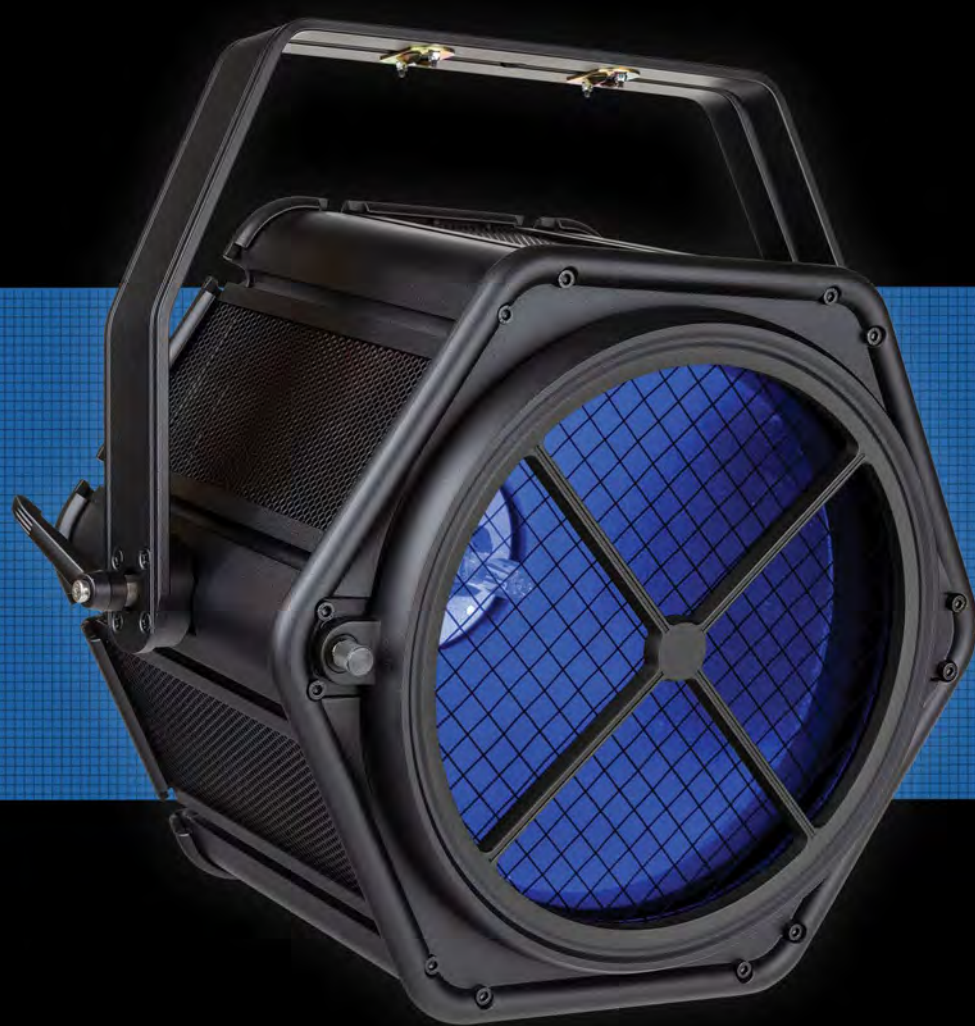


BriteQ®

L I G H T R E S E A R C H





BTX-TITAN (ART. 04378)

- Beam, Spot and Wash in 1 unit !
- OSRAM SIRIUS HRI 280 lamp (7800K)
- BEAM: 2,7° ~ 11°, max. 82.650 lux @ 20m
- SPOT: 5° ~ 23°, max. 25.400 lux @ 10m
- 14 colors + 14 static gobos + 9 rotating gobos
- 2 Prisms (combinable) : 8 facet round + 6 facet linear
- Linear FROST-filter (WASH effect)
- Motorized ZOOM + FOCUS
- 2.8" Color touch screen
- 3-Phase motors : fast pan/tilt (8 or 16bit)
- Power consumption : only 400W.
- Case for 2 devices available (art. 03251)



BTX-SATURN (ART. 04424)

- Very bright moving head projector based on a powerful 270W LED engine (8000K) !
- 8° beam : 27'500 lux @ 5m
- 45° beam : 1'460 lux @ 5m
- Linear CMY color mixing
- Separate color wheel: 9 colors + open
- Motorized ZOOM (8°-45°) + FOCUS + IRIS
- 2 gobo wheels : 7 rotating + 9 fixed
- Rotating 3 facet prism + frost filter for wash effect
- Extremely fast electronic dimmer/shutter
- Different strobe effects
- Extremely low noise: perfect for theatres, ...
- Neutrik PowerCON® TRUE-1 in/out
- Case for 4 devices available (art. 03273)



BTX-HAWK (ART. 04398)

- A very bright moving head projector
- Based on a powerful 180W LED engine!
- Highly polished 13° optics guarantees an incredibly sharp and bright output: 49500 lux @ 1m!
- Very fast pan/tilt movements
- 3 facet + linear prism
- Frost filter
- 8 or 16bit resolution pan/tilt resolution with X/Y position correction and pan/tilt speed channel.
- Uses 13 or 15 DMX channels.
- Case for 2 devices available (art. 03263)

NEW



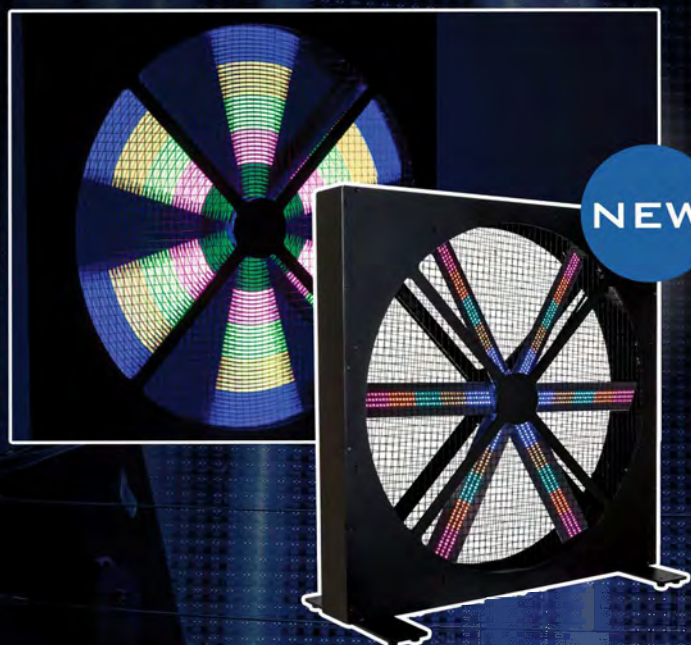
BTX-CIRRUS (ART. 05515)

- Extremely powerful moving wash (19'000lx @ 5m, 4°)
- Equipped with 19pcs OSRAM 30W RGBW leds
- Full 16bit dimming for all pixels + full pixel mapping
- Linear zoom from 4° to 60°
- Control: DMX, WDMX, sACN & Art-Net
- Very quiet operation, perfect for bigger theatres, stages, ...
- 3-Phase MOONS' motors for very fast 540°/270° PAN- and TILT-movements (8 / 16bit)
- Battery backup and auto rotate touch screen
- 3pin & 5pin + RJ45 in/outputs with internal GB-switch for easy linking
- Neutrik PowerCON® TRUE-1 in/out: up to 16A daisy chaining
- Omega brackets for fast installation.
- Case for 2 devices available (art. 03288)



BT-ORBIT (ART. 04423)

- Successor of the popular BT-W19L10 ZOOM with redesigned optics and 65% more output : 8400 lux @5m /10°
- 19pcs4in1 RGBW 15W leds
- 3 individually controlled LED-rings
- 10° to 60° zoom
- Perfect color consistency and extremely smooth dimming from 0% to maximum output
- Calibrated color macros for easy programming
- Multiple DMX channel modes + 2 modes that are 100% compatible with the BT-W19L10 ZOOM
- Automatic X/Y re-positioning
- Low consumption : only 290W
- Case for 4 devices available (art. 03272)



BT-LEDROTOR (ART. 05516)

- High power 70x70cm LED-EFFECT FAN
- Use in all kinds of show applications: TV, Rental, Discos, ...
- 6 fan blades equipped with in total 720 RGB-leds
- 5 individual RGB-sections per fan blade (total: 30 pixels)
- Each fan blade can controlled individually!
- Amazing built-in pixels patterns + free pixel programming.
- 32pcs 3W UV-leds to light up the blades in the dark!
- 3 DMX-modes: 5 (easy!) + 12 & 33CH for full control!
- Very slow to very fast bidirectional fan rotations
- Easy truss installation, thanks to 2 included omega brackets
- Easy floor installation, thanks to 2 included floor stands
- 3pin & 5pin + Neutrik PowerCON® TRUE-1 in/out
- Case for 4 devices available (art. 03283)



WWW.FACEBOOK.COM/ RITEQ



BT-THEATRE 250 EZ (ART. 06017)

- Extremely powerful LED theater spot with electronic 10° ~ 50° zoom.
- 250watt LED, warm white 3200K with high CRI-factor (>92) for natural colors.
- Completely silent operation, no noisy cooling fan.
- RDM-functionality for easy remote setup
- Lock function to avoid unwanted altering of the settings
- User settings can be saved/loaded.
- Neutrik PowerCon in/outputs: easy daisy
- Very high 1200Hz refresh rate (TV-studios)
- Bamdoor included



BT-THEATRE 100EC MK2 (ART. 06008)

- Cost effective LED theater spot with manual 10° ~ 50° zoom.
- The powerful 100W white COB makes it a perfect replacement for a traditional 1000W halogen theater spot
- Color frame for use of color filters and barn doors included
- No more heavy and expensive dimmer packs needed!
- Color temperature 3200K with high CRI-factor: 85 for natural colors
- Neutrik PowerCon in/outputs: easy daisy chaining of several units.
- Very high 1200Hz refresh rate (TV-studios)
- Forced very low noise fan cooling (31dB @ 1m)
- Also available in white enclosure (art.06012)



BT-THEATRE 50WW (ART.06014)

- LED theater spot with manual 10° ~ 50° zoom
- Perfect for use in showrooms, shops, ...
- Four-leaf bamdoor included
- Warm white 3200K with high CRI-factor (>92) for natural colors.
- DMX controlled 1ch & 2ch
- Available with black or white housing
- Also available in Black version (art. 06013)



BT-THEATRE 60FC (ART.06015)

- LED theater spot with manual 10° ~ 50° zoom
- Perfect for use in clubs, shops, rental, ...
- Four-leaf bamdoor included
- 60W RGBW LED
- DMX controlled 4ch, 5ch or 6ch mode
- Low noise, temperature controlled, fan
- Available with black housing
- Selectable lamp behavior : halogen / led

BT-NONABEAM (ART. 05513)

- An impressive new projector for big stages, TV-studios, ...
- Produces dynamic "light curtain" effects with unsurpassed power !
- 9 big 4° lenses each equipped with 60W CW/WW leds
- Each pixel can be individually controlled for 3000K to 6500K 4°-beams
- The black front lights up in any desired color using powerful backlight LEDs
- Different DMX-modes: 9 to 48 channels for full 16bit dimming
- OLED display with backlit touch buttons for easy configuration.
- Amazing built-in beam patterns for fast setup.
- Easy mechanical installation with omega brackets
- Neutrik 3pin & 5pin in/out
- Neutrik PowerCON® TRUE-1 in/out
- Compact size: 58 x 22 x 14cm for easy transport in flight cases!
- Co-designed with Marijn Broeckaert



BT-HURRICANE (ART. 04850)

- DMX-controlled studio & stage fan, also perfect for use in clubs, theatres, rental applications...
- Used for nice fog effects and perfect dispersion of smoke from smoke/hazer machines.
- Very powerful: up to 3500m³/hr or 58m³/min (2060 cfm)
- Seamless airflow (fan speed) control
- Modes: DMX, Wireless DMX and manual operation
- DMX XLR 3+5pin
- Original Neutrik PowerCON
- Adjustable blowing direction: manual orientation over 180°
- LED-display for easy setup and manual control
- Prepared for wireless DMX (optional WTR-DMX DONGLE)
- Easy truss rigging with optional omega brackets
- Perfect for studio use: almost inaudible at low speeds
- Very sturdy metal housing, designed for rough rental applications
- Several handles for easy transport

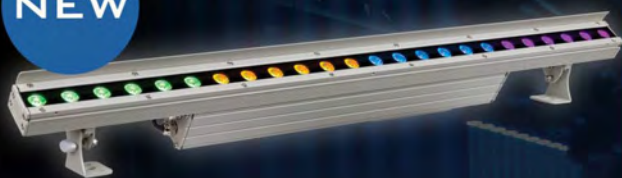


BT-FAZE 7500 (ART. 04851)

- High Performance Fazer effect machine.
- The built-in turbine ensures a powerful dissipation of the smoke.
- Adjustable fog output and fan speed:
 - via 2 DMX channels
 - via the on board control panel with timer
- Continuous output is possible
- Extremely reliable thanks to the self-cleaning system
- Removable 5L fluid tank
- Fluid cap with Quick lock connector
- To be used with Antari FLG Fog Liquid
- 5-pin and 3-pin DMX connectors for input and output



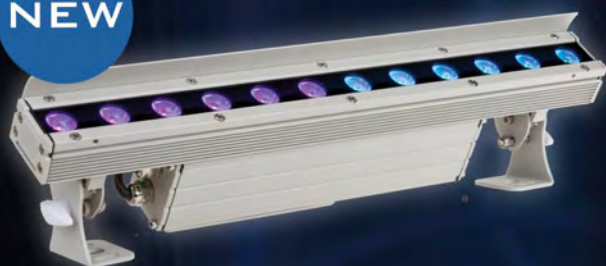
NEW



LDP-COLORBAR 24FC (ART. 05146)

- RGB-projector with excellent light output and perfect color mixing thanks to 24pcs 4Watt RGBW LEDs
- Four sections of 6 LEDs can be controlled separately
- Adjustable and removable barndoor
- The bracket can be easily adjusted in any position
- Optimal thermal management for long lifespan
- Power supply and DMX receiver inside allow daisy chaining
- Waterproof input and output connectors allow the user to link up to 12 units
- IP65: suitable for outdoor installation and use
- Dimensions : 96 x 5,6 x 11,4/13,5 cm

NEW



LDP-COLORBAR 12FC (ART. 05145)

- Identical to LDP-COLORBAR 24FC, except:
- 12pcs 4Watt RGBW LEDs
- 2 (instead of 4) sections of 6 LEDs can be controlled separately
- Dimensions : 46 x 5,6 x 11,4/13,5 cm



LDP-COLORSTRIP 24FC (ART. 05143)

- Powerful indoor LED projector for typical "wall wash" applications.
- Fully compatible with the IP65 outdoor LDP-POWERBAR.
- 4Watt RGBW LEDs: Excellent light output and perfect color mixing.
- 96cm long enclosure, equipped with 24 leds, divided into 4 sections.
- Elegant, extruded aluminum housing.
- The included barndoor reduces unwanted glare.
- Internal power supply for easy installation.
- IEC-C13/C14 and XLR-3pin input / outputs: link up to 16pcs.
- Perfect for use in hotels, clubs, shops, homes, ...
- Completely silent operation, thanks to natural convection cooling system.
- Alphanumeric OLED-display and backlit touch keys to select different options of the setup menu.
- Full DMX control with different channel modes: from 3ch up to 10ch (2 sections) or 20ch (4 sections).

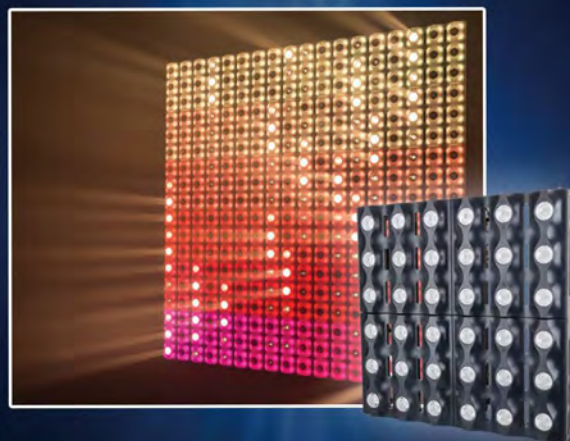


LDP-COLORSTRIP 12FC (ART. 05144)

- Identical to LDP-COLORSTRIP 24FC, except:
- 48cm long
- equipped -with 12 leds, 2 sections.

BT-GLOWPANEL BLACK (ART. 05503)

- Perfect integration of smooth RGB-glow effects and a powerful 6x6 matrix of sharp 4° white beams
- The ingenious concept uses between 4 and maximum 43 DMX-channels for full control
- Each panel contains 36x white 3watt CREE leds + 144x RGB leds
- A lightweight 50x50x8,4 cm diecast ALU-frame and quick lock system allow the build of massive screens in no time
- The LCD-display and XLR 3pin + Power in/out make the installation and setup fast and easy
- Maximum power consumption: 190W
- Optional BT-GLOWPANEL BRACKET (art. 04426)
- White version available: BT-GLOWPANEL WHITE (art. 04425)



BT-GLOWBAR (ART. 04424)

- Perfect integration of smooth RGB-glow effects and 12pcs sharp 4° white beams
- The ingenious concept uses between 4 and maximum 19 DMX-channels for full control
- Each bar contains 12x white 3watt CREE leds + 48x RGB leds
- The 100x83x103 cm long bars can be used separately or can be integrated with the BT-GLOWPANELS
- The LCD-display and XLR 3pin + Power in/out make the installation and setup fast and easy.
- Maximum power consumption : 70W
- Black version available: BT-GLOWBAR BLACK (art.05502)



BT-BLINDER2 IP (ART. 05520)

- 2x 130W BLINDER WITH AMBER DRIFT
- CCT: 1650K – 3000K with CRI 95 !
- Separate/combined pixel control !
- Separate control for white/amber !
- Can be used as LED-strobe (different modes)
- 4 DMX-modes: from 4 to 10ch
- Control channel: remote DMX-control for:
 - red shift
 - dimmer speed/curves
 - pixel order
 - fan speed
- IP65 OUTDOOR use !
- Professional rigging hardware optionally available!



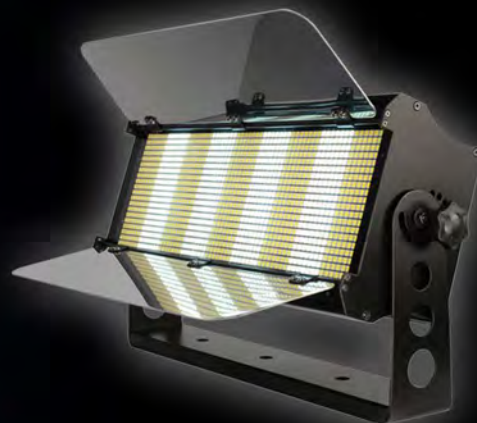
NEW



WWW.FACEBOOK.COM/BRITEQ

BT-GIGAFLASH (ART. 04714)

- Extremely powerful LED strobe with 9 separately controllable segments
- 1260 strobe LEDs for an exceptional light output of +/-100.000 lm
- Long time blinder function with auto fade down function
- Stunning built-in random pixel strobe effects, no extra programming needed
- LCD-display for easy setup menu navigation
- The 2-leaf bamdoor with glossy internal reflector increases the visual output and protects during transport.



BT-GIGAFLASH RGB (ART. 04716)

- Extremely powerful LED strobe with 3 separately controllable segments!
- 1260 RGB strobe LEDs for an exceptional light output of +/-40.000 lm
- Long time blinder function with auto fade down function
- Stunning built-in random pixel strobe effects, no extra programming needed.
- DMX-control
- TV-Studio ready:
 - Natural white: 4500K with CRI > 90
 - Flicker free 2000Hz LED refresh rate
- In case of DMX failure you can choose between blackout and freeze mode.



BT-MAGICFLASH (ART. 04715)

- Powerful LED strobe with 9 separately controllable segments!
- 324 strobe LEDs for an exceptional light output of +/-35.000 lm
- Long time blinder function with auto fade down function
- Stunning built-in random pixel strobe effects, no extra programming needed.
- LCD-display for easy setup menu navigation
- Can be used as wash projector at reduced output
- TV-Studio ready:
 - Natural white: 4500K with CRI > 90
 - Flicker free 2000Hz LED refresh rate
 - Low noise cooling system



BT-MAGICFLASH RGB (ART. 04717)

- Powerful LED strobe with 3 separately controllable segments!
- 324 RGB strobe LEDs for an exceptional light output of +/-15k lm
- Long time blinder function with auto fade down function
- Stunning built-in random pixel strobe effects, no extra programming needed.
- DMX-control
- Can be used as wash projector at reduced output
- TV-Studio ready:
 - Natural white: 4500K with CRI > 90
 - Flicker free 2000Hz LED refresh rate
- In case of DMX failure you can choose between blackout and freeze mode.





BEAMSPOT

DMX VERSIONS:

- The perfect "high power" LED BEAM PINSPO
- Uses a 15W LED with 4.5° lens
- OLED display for easy menu navigation
- Strong die-cast ALU housing
- Convection cooling, no fan: no noise!
- XLR 3pin in/out, PowerCON® in/out
- Different versions :
- Natural white 4500K: BEAMSPOT-DMX NW (art. 04956)
- Warm white 3200K: BEAMSPOT-DMX WW (art.04960)
- Color RGBW: BEAMSPOT-DMX FC (art. 04957)

TRIAC VERSIONS:

- Powerful 15W WHITE LED with 4.5° lens
- Direct replacement for the old PAR36 PINSPO !
- NO DMX inside: can be dimmed using traditional triac dimmers or with the dimmer knob on the back panel
- Different versions :
- Warm white 3200K: BEAMSPOT-TRIAC WW (art. 04954)
- Natural white 4500K: BEAMSPOT-TRIAC NW (art. 04955)



BEAMSPOT-4BAR

- Compact 4bar has four 15W projectors with a very narrow 4° beam
- Included 10° & 45° filters
- High CRI-factor (>90)
- 4 different DMX-modes: control via 1, 2, 4 or 5 channels
- TV-Studio ready: no cooling fans and flicker free 1200Hz LED refresh rate
- 3pin & 5pin DMX in/outputs and Neutrik® PowerCON® in/outputs for easy daisy chaining
- RDM-functionality for easy remote setup
- 2 versions available:
- Warm white 3200K: BEAMSPOT-4BAR WW (art. 05507)
- Natural white 4500K: BEAMSPOT-4BAR NW (art. 05508)

BT-AKKULITE IP (ART.05135)

- Battery operated outdoor LED-projector, based on 6pcs 10Watt RGBWA-LEDs to avoid unwanted color shadow
- Beam angle : 22°
- Projection angle adjustable from 25° (vertical to horizontal)
- +/- 10hrs use in fading mode on fully charged battery!
- Each projector is equipped with a wireless transceiver module (transmitter and receiver) wich is 100% compatible with the W-DMX G4-protocol from "Wireless Solution Sweden"
- Weatherproof IP-Power mains input + Weatherproof 3-pin XLR input and output connectors



NEW



BT-COLORAY 120R (ART. 05509)

- Stylish 120W RGBW single beam projector with 15° lens
- IP65 rating
- RDM-functionality for easy remote setup
- TV-Studio ready: flicker free 1200Hz LED refresh rate
- White balance adjustment to perfectly match the colors of several projectors
- 5pin DMX in/outputs and Neutrik® TRUE1 PowerCON® in/outputs for easy daisy chaining
- Three different DMX-modes: 4, 6 and 7 channels

NEW



BT-COLORAY 60R (ART. 05510)

- Stylish 60W RGBW single beam projector with 15° lens
- IP65 rating
- RDM-functionality for easy remote setup
- TV-Studio ready: flicker free 1200Hz LED refresh rate
- White balance adjustment to perfectly match the colors of several projectors
- 5pin DMX in/outputs and Neutrik® TRUE1 PowerCON® in/outputs for easy daisy chaining
- Three different DMX-modes: 4, 6 and 7 channels

NEW



BT-COLORAY 18FCR (ART. 05511)

- Stylish 18x8W RGBW projector with a 20° beam angle
- IP65 rating
- RDM-functionality for easy remote setup
- TV-Studio ready: flicker free 1200Hz LED refresh rate
- White balance adjustment to perfectly match the colors of several projectors
- 5pin DMX in/outputs and Neutrik® TRUE1 PowerCON® in/outputs for easy daisy chaining
- IP-Fan cooling for longer LED life
- Three different DMX-modes: 4, 6 and 7 channels

DESIGNED IN BELGIUM



STAGE BEAMER FC

- New version of BRITEQ STAGE BEAMER
- Extra "16 bit TOUR"-mode with 16 bit colormixing
- DMX-input and output with 3p and 5p connectors
- Very powerful RGBW LED projector based on 14 quadri-color 5W OSRAM LEDs:
Unwanted RGBW shadows are completely eliminated
Perfect and evenly spread color mixing, even at short range.
- Beam angle: 14°
- 1200Hz LED scan rate
- Color temperature presets 3200K ~ 10000K + RGBW Calibration
- Tempered glass lens protection
- Completely silent: the projector is cooled by natural air convection
- 2 versions available: - INDOOR (art. 05504)
- OUTDOOR (art. 05511)



BT-ULTRAZOOM (ART. 04396)

- Extremely powerful 180W RGBW LED projector
- The fast but smooth 4° to 40° motorized zoom can be used to create incredible zooming effects
- Thanks to the unique optical lens design this projector produces a perfectly uniform beam with excellent color mixing
- The sturdy die cast aluminium housing is IP65 waterproof
- IP-Power (Seetronic) connectors
- Six DMX-modes from 5 to 17 channels
- The projector looks like a traditional lamp but has all the advantages of LED: energy cost savings!
- Color temperature presets: 2700K ~ 8000K



BT-SMARTZOOM (ART. 04397)

- Extremely powerful 120W RGBW LED projector
- The fast but smooth 4° to 40° motorized zoom can be used to create incredible zooming effects
- Thanks to the unique optical lens design this projector produces a perfectly uniform beam with excellent color mixing
- The sturdy die cast aluminium housing is IP65 waterproof
- IP-Power (Seetronic) connectors
- Six DMX-modes from 5 to 17 channels, including 2 modes
- The projector looks like a traditional lamp but has all the advantages of LED: energy cost savings!
- Color temperature presets: 2700K ~ 8000K



PRO BEAMER ZOOM RENTAL (ART.04399)

- Very powerful RGBW LED projector
- Unwanted RGBW shadows are completely eliminated
- Perfect and evenly spread color mixing, even at short range.
- Motorized zoom: 8° - 40°
- 2 zone pixel control (center + ring effect)
- Color temperature presets 3200K ~ 10.000K
- The sturdy die cast aluminium housing is IP66 waterproof
- IP-Power (Seetronic) connectors
- White & RGB Calibration
- Different dimmer curves
- Tempered glass lens protection





BT-VINTAGE (ART. 04547)

- This attractive RETRO-STYLE PROJECTOR is the perfect eyecatcher for many applications !
- The combination of its gold colored reflector and HPL-575 lamp produces a pleasant warm light
- The integrated high power RGB-leds (156 x 1W RGB) can light up the reflector to produce amazing extra effects
- BT-VINTAGE has integrated DMX-control for dimmer & RGB-effects
- PowerCON & XLR 3+5pin in/out
- Prepared for use with Omega brackets
- Case for 2 devices available (art. 03271)



NEW



BT-RETRO (ART. 05518)

- This attractive RETRO-STYLE PROJECTOR is the perfect eyecatcher for many applications !
- The combination of its gold colored reflector and HPL-575 lamp produces a pleasant warm light
- The integrated high power RGB-leds (48 x 3W RGB) can light up the reflector to produce amazing extra effects
- Several units can be fixed together by use of the optional BT-RETRO coupling adapter (order code 05519)
- TV-Studio ready: passive cooling system and flicker free 1200Hz LED refresh rate
- PowerCON & XLR 3+5pin in/out
- Prepared for use with Omega brackets
- Case for 2 devices available (art. 03289)



DESIGNED IN BELGIUM



TRUE1 CABLES

- TRUE1/XLR-5P COMBI CABLE 1,5M (art. 01412)
- TRUE1/XLR-5P COMBI CABLE 3M (art. 01413)
- TRUE1/XLR-5P COMBI CABLE 5M (art. 01414)
- TRUE1/XLR-3P COMBI CABLE 1,5M (art. 01425)
- TRUE1/XLR-3P COMBI CABLE 3M (art. 01426)
- TRUE1/XLR-3P COMBI CABLE 5M (art. 01427)
- POWERCABLE TRUE1 2M (art. 01440)



POWERCABLE

- POWERCABLE-3G1,5-3M-F (art. 01375)
- POWERCABLE-3G1,5-5M-F (art. 01376)
- POWERCABLE-3G1,5-10M-F (art. 01377)
- POWERCABLE-3G2,5-5M-F (art. 01381)
- POWERCABLE-3G2,5-10M-F (art. 01382)
- POWERCABLE-3G2,5-20M-F (art. 01383)



MULTISOCKET4PRO

- SEMKO and CE certified 4-socket box
- IP44 - 16A - 250V - MAX 3680W
- French & Belgian socket
- MULTISOCKET4PRO-F-3M (art. 01387)
- MULTISOCKET4PRO-F-5M (art. 01389)



CEE-CABLES

- SEMKO and CE certified CEE-CABLES:
- IP67 - 63A-6H - 220/380V - 3P+N+E
- CEE-CABLE-32A-5G6-5M (art. 01391)
- CEE-CABLE-32A-5G6-10M (art. 01392)
- CEE-CABLE-32A-5G6-20M (art. 01393)
- CEE-CABLE-63A-5G16-5M (art. 01394)
- CEE-CABLE-63A-5G16-10M (art. 01395)
- CEE-CABLE-63A-5G16-20M (art. 01396)



PD-32SH



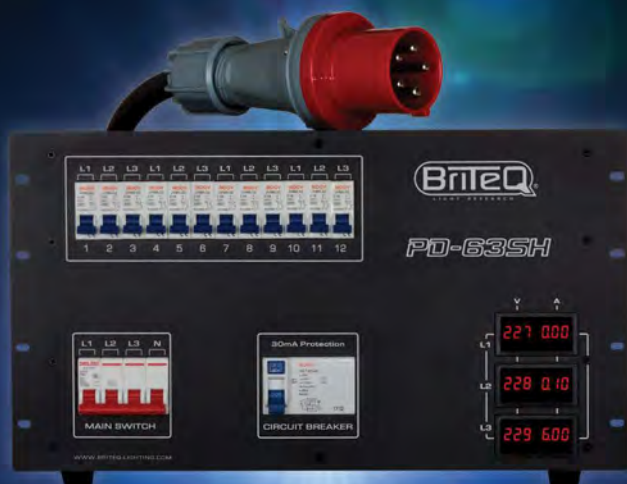
- Identical to the PD-32A but with additional
- 19pin Socapex and 16pin Harting.
- 3-phase power distributor.
- Designed and build compliant to the highest European and international safety standards.
- 30mA, 4pole residual current circuit breaker
- Oversized internal wiring for increased reliability!
- Accurate digital 3-digit V-per phase
- Accurate digital 3-digit A-meters per phase
- Two C16 (16A - 1P+N) automatic circuit breakers per phase
- 1,5m long mains input cable (3x 32A, 5wire) equipped with CEE (3P+N+E) 32A inlet plug
- CEE (3P+N+E) outlet socket (3x 32A, 5wire) for bypass.
- 6x earthed 16A mains outlet sockets on the back panel (2 sockets per phase)
- Extremely robust 19"/3U metal housing
- Available with 2 types of connectors :
 - PD-32SH/FR-BEL (art. 04636)
 - PD-32SH/GERMAN (art. 04637)

PD-63A MK2/CEE (ART. 04641)



- 3-phase power distributor
- Connections output:
 - 2x CEE (3P+N+E) 32A outlet sockets (3x 32A, 5wire). Equipped with C32 (32A - 3P+N) 4-POLE automatic circuit breaker per 32A output.
 - 3x CEE (2P+E) blue 230V/16A mains outlet sockets (1 socket per phase). Equipped with C16 (16A - 1P+N) 2-POLE automatic circuit breakers per 16A socket.
- Connections input:
 - 1,5m long mains input cable (3x 63A, 5wire). Equipped with CEE (3P+N+E) 63A inlet plug.
 - Equipped with a 3P+N, 30mA residual current circuit breaker protects users against electrical shocks.
- Accurate 3-digit voltmeters and ampere meters per phase.
- Universal CEE (2P+E) blue 230V/16A mains sockets.

PD63SH



- This 3-phase power distributor is designed to improve safety
- Designed and build to the highest European and international safety standards
- Oversized internal wiring for increased reliability !
- 63A 4pole circuit breaker protects ALL outputs, including the 63A output to the next unit
- 12x earthed 16A mains outlet sockets
- 2x 16pin Harting + 2x 19pin Socapex
- CEE 63A (3P+N+E) outlet socket
- The 30mA, 4pole residual current circuit breaker prevents electrical shocks
- Phase indicators to easily check if the 3phases are available
- 2 accurate digital 3-digit volt- and ampere-meters per phase
- Extremely robust 19"/6U metal housing
- Available with 2 types of connectors :
 - PD63SH/FRA-BEL (art. 04647)
 - PD63SH/GERMAN (art. 04648)

RICO-V4 (ART. 04845)

- Controls 4 chain hoists individually
- Each channel is equipped with a motor phase inverse switch
- Several units can be linked in master/slave (XLR-5pin in/out)
- Optional RICO-REMOTE available (art. 04650) that can control several units
- Both RICO-V4 and the optional remote have separate UP/DOWN buttons + Emergency knob
- Input: 400V (3P+N+E) with 3 phase indicators & C32 (32A-3P+N) 4-POLE automatic circuit breaker
- Multifunctional outputs: 4x CEE 16A (4p), 1x Harting 16pin, 1x Socapex 19pin, 1x mains outlet 16A with C16 (16A - 1P+N) 2-POLE automatic circuit breaker, 1x CEE 32A (to extra unit)
- Dimensions: 19" / 4U



RICO-V8 (ART. 07000)

- Standalone chain hoist motor controller
- Controls up to 8 motors in standalone operation
- Several units can be linked in master/slave using the link in/out on the back panel:
 - Easy control for a larger number of chain hoists.
 - Simultaneous control with UP/DOWN buttons on the master
 - Centralized Emergency stop on the master controller.
 - "Slave" indicator led.
- Manual phase inversion switch for each output.
- Remote control input (XLR) with led indicator to connect the optional RICO-REMOTE
- 32A 4pole circuit breaker protects ALL outputs, including the 32A output to the next unit
- Two C16 (16A - 1P+N) 2-POLE automatic circuit breakers for control circuit + auxiliary output.
- Mains input cable (3x 32A, 5wire), equipped with CEE (3P+N+E) 32A inlet plug
- CEE (3P+N+E) outlet socket (3x 32A, 5wire) for bypass
- Designed and build in Europe to the highest international safety standards!



BT-NODE24 SERIES

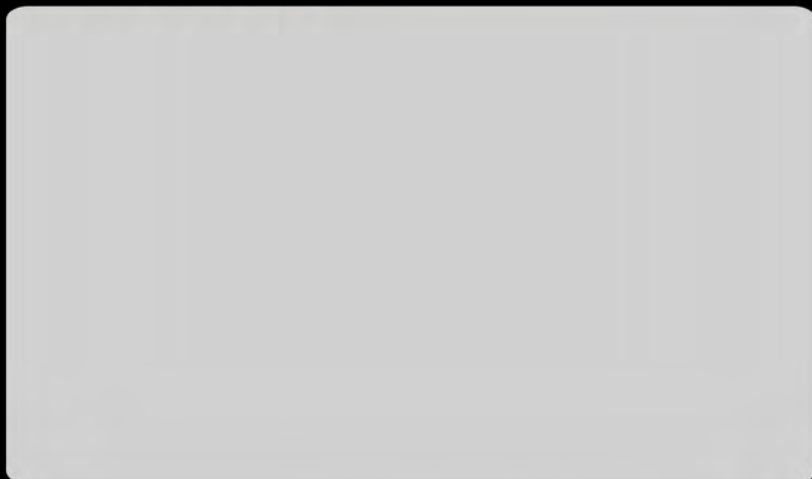
- HIGH SPEED ART-NET node!
- GIGABIT Ethernet I/O with internal switch (linking without delays)
- 4 DMX I/O: configured as you like!
- MIDI I/O: control MIDI via Ethernet!
- Configuration via WEB-interface
- NFC for use with smartphones
- Power:
 - 230Vac: TRUE-1 daisy chaining
 - PoE: Power over Ethernet
- Small 1/2 19" size:
 - Easy truss mounting
 - 2 units fit in 1U 19" rack
- 2 versions :
 - BT-NODE24 (3pin XLR) (art. 05014)
 - BT-NODE24 (5pin XLR) (art. 05015)



AT THE TOP OF DEVELOPMENT

BRITEQ, with head offices based in Belgium near Brussels, is at the top of light engineering with a competitive team of belgian engineers. Ideas become reality thanks to BRITEQ's intensive contact with the real users : you ! The in-house development does not merely guarantee a good building quality, it allows you to stand out in your market.

YOUR DEALER



FOLLOW US



[WWW.FACEBOOK.COM/BRITEQ](https://www.facebook.com/BRITEQ)

BEGLEC NV HAS THE RIGHT TO CHANGE PRODUCTS AND SPECIFICATIONS WITH AND WITHOUT NOTICE. MAJOR AS WELL AS MINOR CHANGES CAN BE INVOLVED. THIS CATALOG CAN CONTAIN ERRORS, THEREFORE WE ADVISE TO CONSULT YOUR LOCAL DEALER TO ENSURE THAT ACTUAL FEATURES AND SPECIFICATIONS MATCH YOUR REQUIREMENTS.

COPYRIGHT © 2018 BY BEGLEC NV. ALL RIGHTS RESERVED.