

APPLICATION EXAMPLE

LARGE FUNCTION SUITE

SUPPORT DATA

APPLICATION

Large Function Suite


OBJECTIVE

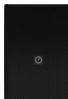
A capable background music system for a 150-capacity function suite host to a multitude of different events. The system must offer local audio inputs for a band or DJ and also control from a staff area


CUSTOMER REQUIREMENT

- ▶ Capable background audio system with foreground ability
- ▶ Staff control of volume and source from a guest restricted area
- ▶ Local inputs for entertainment plug in at the far side of suite
- ▶ No equipment to be mounted on the floor
- ▶ Private room independent of main suite to have own audio system.

PRODUCT SOLUTION

 **4FW50T**
2x 4" Wideband loudspeakers for private room

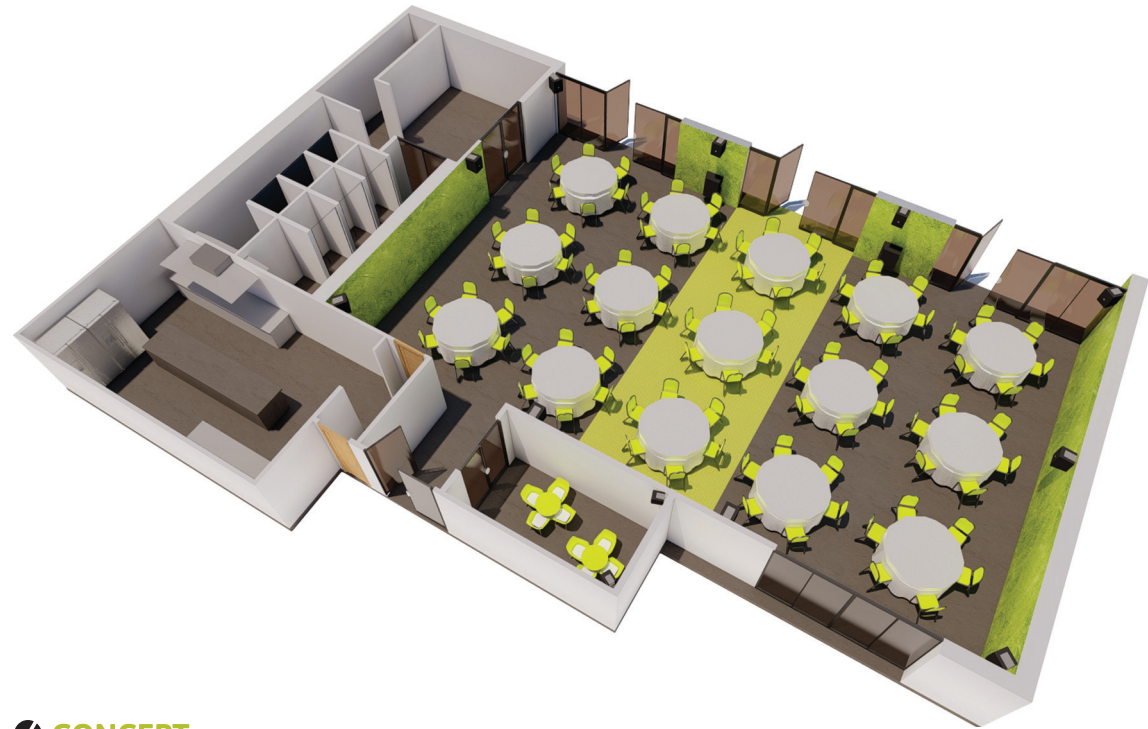
 **6FP100T**
8x 6.5" 2-Way loudspeakers for function area

 **8SM300T**
4x Dual 8" subwoofer for function area

 **4SDL160**
4x 4-Channel amplifier

 **PAA42**
1x Multimedia preamp

 **2SDL70 & VLA42**
1x each for private room



CONCEPT

The main function suite offers a wide range of audio playback options thanks to the PAA42 media player and offers features above and beyond what the client needed. The balanced FOH input was patched to a wall plate in the desired location offering easy plug-in ability for entertainment providers. It was installed using the optional VRE11 wall panel which was installed in a staff area offering all staff the ability to adjust the master volume, select the source and also plug in a local 3.5mm TRS audio source which was largely used with the client's media device. The PAA42 was also linked to the function suites emergency alarm system conforming with local laws.

The suite had eight 6FP100T loudspeakers suspended on the wall using the optional VESA mount bracket. A further four 8SM-300T compact subwoofers were used to provide extra low-end extension and power when higher SPL's were required. As per the install requirements, the subwoofers were mounted off the floor using the inclusive wall mount bracketry. Four 4SDL160 four channel amplifiers powered the main suite and were configured to run in their 2.1 mode.

For the private hire room, this consisted of a pair of 4FW50T wideband loudspeakers, a single 2SDL70 power amplifier and VLA42 volume control node, of which the latter two were mounted above the false ceiling. The optional VRE11 wall panel was installed to offer the client a friendly user interface as well as offer a local 3.5mm TRS audio input for almost any media device when necessary.

SUPPORT DATA